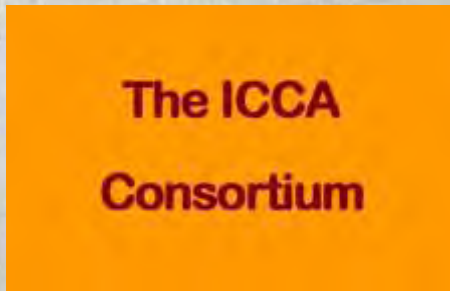


# PHILIPPINE ICCA: ROOTEDNESS FROM MULTI-SECTORAL COLLABORATION









# Launching of sub-national ICCA Conferences:

## 1. Luzon & Island Groups





## 2. South-eastern Mindanao; and 4. Northern and Western Mindanao.







**IT CULMINATED IN THE  
CONDUCT OF A NATIONAL  
ICCA CONFERENCE  
(MARCH 2012)**





# IP leaders themselves presented the sub-national reports







**POLICY SUPPORT:** *Senate of the Philippines, House of Representatives and the Office of the Executive Secretary, United Nations Convention on Biological Biodiversity*





# Support from UNDP-UP-UNEP-WCMC





# From margins to mainstream

Consolidation of results



*Formulation of Guidelines during the Sub-National conferences*

*Identification of activities during the National Conference*

CONSOLIDATED ACTION PLAN

Approved Planned Activities

Plenary Review

Group Planning workshop





## Birth of the Manila Declaration on ICCA For Legislative Adoption





## THE DECLARATION

***EMPHASIZES RIGHTS TO  
ANCESTRAL DOMAINS AND  
OUTLINES THE ROLE OF  
INDIGENOUS COMMUNITIES,  
GOVERNMENT AND CIVIL  
SOCIETY/NGOs***







**For Government: *“View ICCA as a strategy for protection, management, development and Peace Building”***







**For Support Groups: *“Strengthen the involvement and inclusion of indigenous peoples and their support groups”***







**FOR IPs: “COMMUNITIES SHALL PREPARE PLANS FOR THE EFFECTIVE MANAGEMENT OF ICCAs”**





# ICCA WORK BEGINS WITH COMMUNITY RESOLUTION





# Steps on ICCA Documentation and Recognition

Popularization of CCP and  
Resource Mobilization

Registration of the ICCA at UNEP-  
WCMC

Community Declaration of ICCA

Formulation of the Community Conservation Plan  
(CCP)

Participatory Data Gathering

Mobilization/ Preparatory Activities/Community Action Planning







# Preparatory WORK: Consultations with Elders





' Sampling Plots





# PARTICIPATORY DATA GATHERING





MEASURING  
TREE  
SPECIES AND  
LATER ON  
DETERMINE  
CARBON  
STOCK





# Participatory 3D Map Construction and land use coding



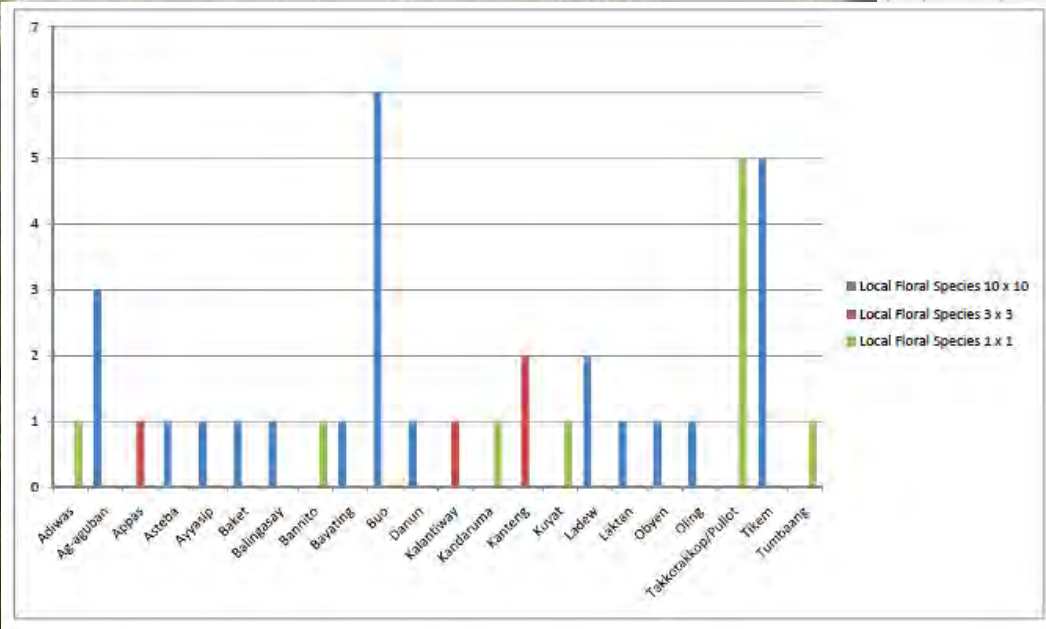
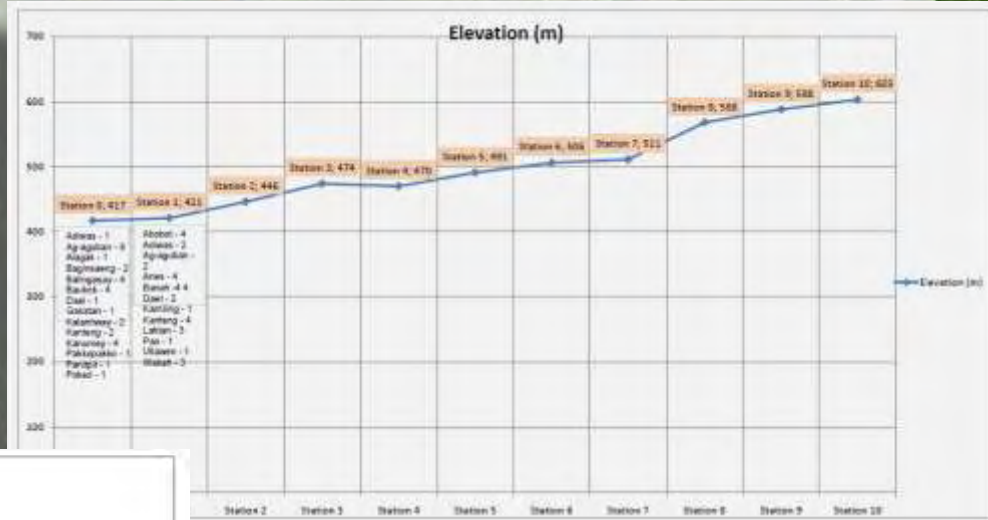




# Community Conservation Planning







RI data is presented and analyzed during CCP









# MAPORAC ICCA FPIC REGISTRY FORM (March 2012)



United Nations Environment Programme  
World Conservation Monitoring Centre

## FREE, PRIOR AND INFORMED CONSENT FORM

*A Global Registry for Understanding Indigenous and Community Conserved Areas (ICCA)*

We, the undersigned, in representation of the community or indigenous peoples named here **Ayta Abdol of Sida Maporac, New San Juan and Caraban, Cabaungan, Zamboanga**, referred to as "our ICCA Community") holder of the customary rights of **POON BIYAY** (referred to as "our ICCA"), confirm that:

- Our ICCA Community wishes to contribute information to the ICCA Registry managed by UNEP-WCMC.
- This decision has been taken:
  - (a) On the basis of information provided to us about the ICCA Registry by way of the ICCA Registry Information Sheet (available at [www.iccainfo.org](http://www.iccainfo.org)) which we have read and understood; and
  - (b) Following a culturally appropriate process of discussion and consultation in accordance with our normal decision-making practices.
- **Chiefdom Salvador A. Dimain** (give name(s) of information provider(s)) are authorised to provide data and information to the ICCA Registry in accordance with this FPIC Form although we may nominate persons or entities to provide data and information to the ICCA Registry from time to time.
- We understand that participation in the ICCA Registry is entirely voluntary.
- We understand that we may withdraw our contribution to the ICCA Registry, or any part of it, at any time without explanation or consequences and that, if we do, we will be entitled to request our information be removed from Registry records and excluded from any future analyses.
- We are providing data and information to the ICCA Registry on the basis that we will retain all our intellectual property rights as recognised by law. There will be no transfer of ownership rights in any such intellectual property to UNEP-WCMC or any of its ICCA partners as a result of any contribution by us of data or information to the ICCA Registry.
- We are providing data and information to the ICCA Registry on the basis that it will not be put to commercial use by UNEP-WCMC, or any of its ICCA partners or any other third party.
- We are providing data and information to the ICCA Registry on the basis that sensitive information about personal identity as well as confidential information will not be disclosed, published or otherwise revealed to any other party whatsoever except with specific prior written authorisation.
- We understand that if we have any questions about the operation of the ICCA Registry or the use of any data or information which we have provided, or if we have any complaints or concerns

relating to the ICCA Registry, we may contact the Registry Managers who will discuss our queries or concerns with a view to reaching agreement on an appropriate solution.

- We understand the purposes of the ICCA Registry and the possible uses of information. We understand that there are different levels of access to data and information provided to the ICCA Registry. Data and information may be openly available to the public through the World Database on Protected Areas (subject to the terms and conditions available at <http://www.protectedplanet.net/termsandconditions>) or available on a password protected basis, or available to ICCA Registry Managers only. We are providing data and information to the ICCA Registry on the basis that we may specify the level of access to be given to different types of information, as checked below.

### Use of ICCA Information

Please tick the appropriate boxes if you consent to the provided data being shared in the following ways:

Type of Information	Available WPAW*	Available to ICCA Registry	Available only to Registry Managers and other designated persons	Only available to Registry Managers
General or descriptive information about ICCAs (in particular, information about the area, the community/ies, and the presence of specific species, habitats and/or genetic material (plant/animal) as well as their utilisation)	<input type="checkbox"/>	<input type="checkbox"/>	<input checked="" type="checkbox"/>	<input type="checkbox"/>
Exact data (latitude and longitude of the centre point of the ICCA)	<input type="checkbox"/>	<input type="checkbox"/>	<input checked="" type="checkbox"/>	<input type="checkbox"/>
Boundary data for the ICCA (supported as a GIS shapefile if available or as a map on paper (in a publication or on a website))	<input checked="" type="checkbox"/>	<input type="checkbox"/>	<input type="checkbox"/>	<input type="checkbox"/>
Photos, videos and other media	<input type="checkbox"/>	<input checked="" type="checkbox"/>	<input type="checkbox"/>	<input type="checkbox"/>
Additional comments				

\*The term used in the World Database on Protected Areas (WDPA) is available under the Terms and Conditions <http://www.protectedplanet.net/termsandconditions>

Ayta Community in Cabaungan  
**SALVADOR A. DIMAIN**

Name of community (and signing representative(s))

January 14, 2013  
Date

A copy of this consent form will be left with the community and a copy will be kept with the Registry Managers at UNEP-WCMC. This form can be completed online at <http://www.iccainfo.org/registry>



## Manila Declaration Authorized KASAPI to form a national ICCA Network







**Phil ICCA Network Founded on  
19-22 February 2013**





# PHIL ICCA INTERNATIONAL ENGAGEMENTS





# COP 11, Hyderabad, India

**Positioning ICCA Model in the mainstream of global conservation**

**ICCAs, Aichi Targets and GEF-SGP-UNDP: Delfin Ganapin**





# No. of References on ICCAs throughout the COP 11 Decisions

- 210 times: “Indigenous and Local Communities
- 81 times : “traditional knowledge”
- 51 times : “Customary Sustainable Use”
- 37 times : “full and effective participation”
- 12 times : “ Sui Generis Systems
- 12 times : “governance”
- 11 times : “ rights”
- 11 times : “livelihoods”
- 9 times : “ICCA”
- 9 times : “tenure”
- 8 times : “Community Protocols”
- 5 times : “traditional territories
- 4 times : “prior and informed consent”
- 4 times : “customary laws”
- 2 times : “ICCA Registry





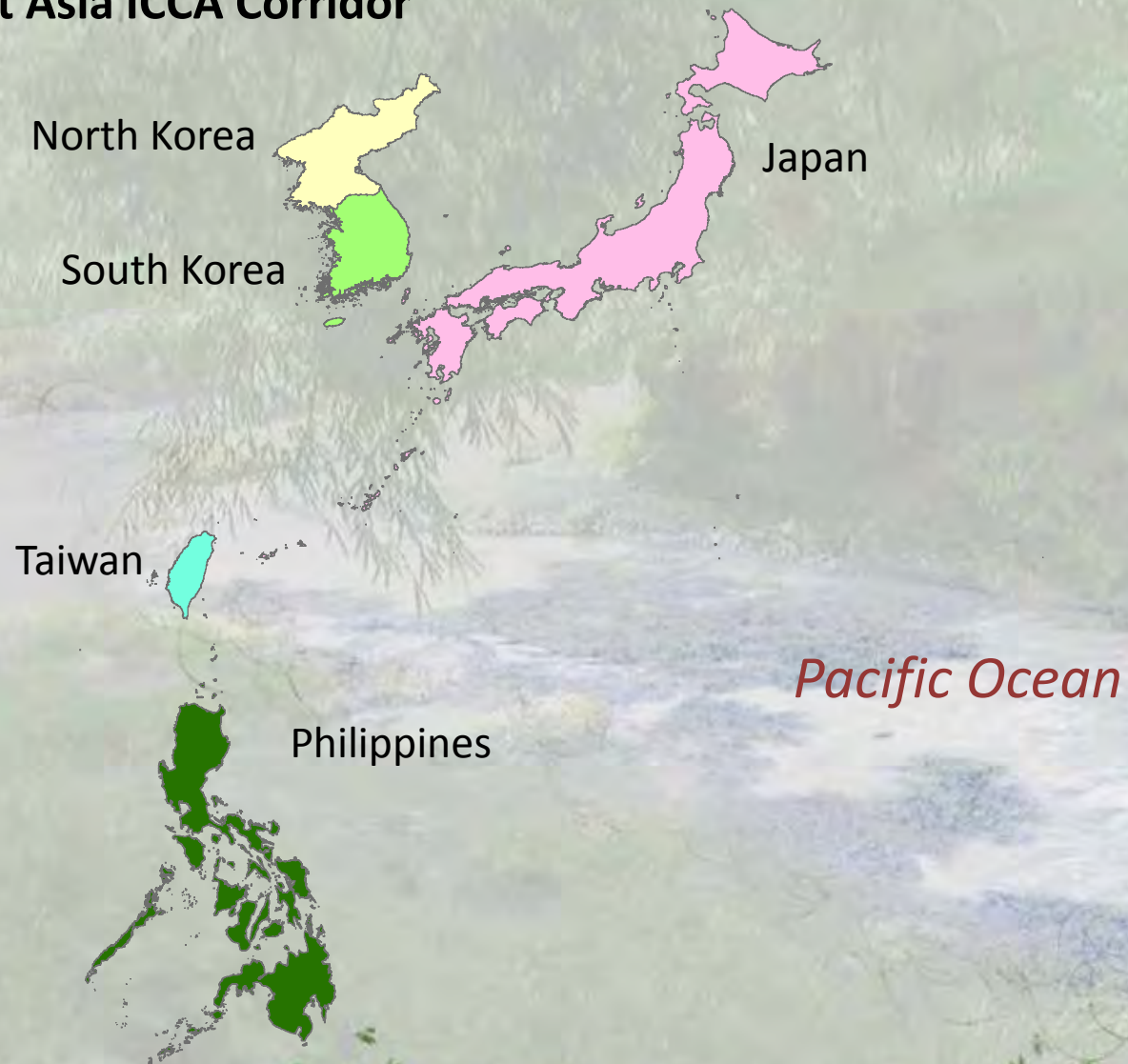
# PHIL-TAIWAN ICCA EXCHANGE

## 17-21 May 2013





## Towards East Asia ICCA Corridor







WORLD INDIGENOUS NETWORK, Darwin, Australia





# ICCA REGISTRY

ICCA Indigenous and Community Conserved Areas

[HOME](#) / [ABOUT ICCAs](#) / [EXPLORE](#) / [PARTICIPATE](#) / [FAQs](#) / [CONTACT](#) / [LOGIN](#)

## Recognising indigenous and community conservation

### Welcome to the ICCA Registry

**Learn** about ICCAs (Indigenous and Community Conserved Areas), an important form of local conservation.

**Participate** in the ICCA Registry. Register your ICCA or submit a case study.

**Explore** interactive maps and ICCA case studies. Begin your journey with the world map.



### Introduction

The ICCA Registry website is an online information platform for Indigenous and Community Conserved Areas, where communities themselves provide data, case studies, maps, photos and stories which result in useful statistics and analysis on featured ICCAs around the world. Participation in the ICCA Registry multiple benefits for participating communities. The ICCA Registry is on-publicly accessible database on ICCAs and is a critical mechanism

Voluntary online registration of ICCAs to provide the best available knowledge





# As a Rights-Based Process



## UNDRIP

Art. 3. – Self-Determination

Art 32 – Culture, Identity,  
FPIC and Obligations of States

Art. 37. – Treaty Principles



Convention on  
Biological Diversity

**Art. 8 (j)** – Recognition of traditional governance relevant to conservation.

**Art. 10 (c)**- Customary use of biological resources according to traditional cultural practices

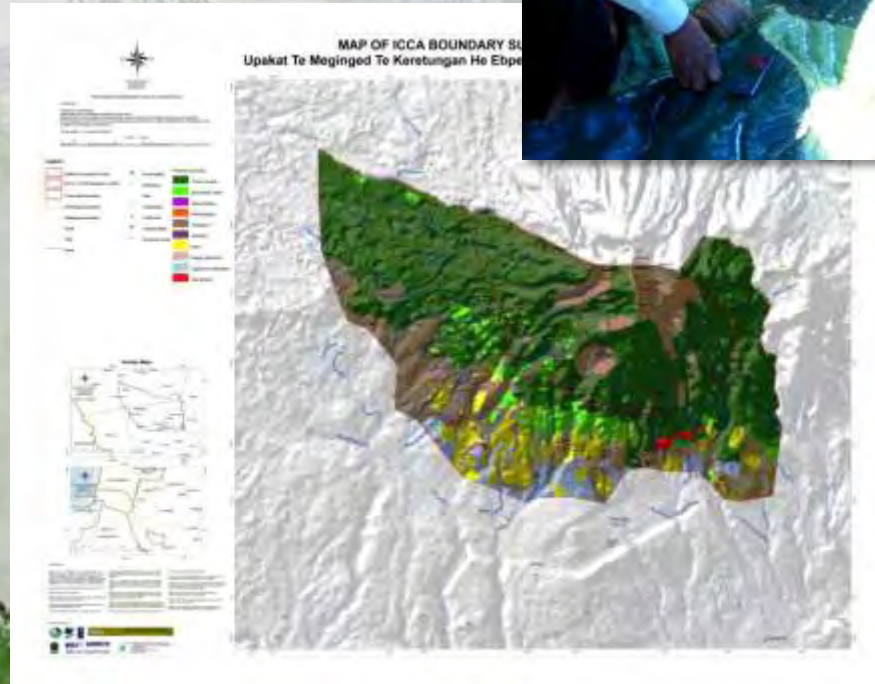




# As a Community Effort

- Documented biological, ecological and cultural values thru community-generated:

- Maps
- Photos
- Stories
- Case studies





# PREPARATORY CONFERENCE FOR THE UN High Level Plenary Meeting of the General Assembly World Conference on Indigenous Peoples, Alta, Norway

Draft Alta Outcome Document

Adoption, Alta Outcome Doc





# Global Conference on Participatory Mapping, Samosir Island, North Sumatra





# RECOMMENDATION

- SUPPORT AND SUSTAIN NATIONAL ICCA EFFORTS
- ORGANIZE AND LAUNCH REGIONAL ICCA TRAINING CONFERENCES ON PARTICIPATORY MAPPING
- COME UP WITH A CONSOLIDATED GLOBAL ICCA MAPPING CONFERENCE
- CONDUCT ICCA EXCHANGE VISITS
- SUSTAIN INTERANTIONAL LINKAGING AROUND ICCAs AS “LIVING EMBODIMENTS OF ARTICLES 8 (J) AND ARTICLE 10 ( C) UNCBD AND AICHI CONSERVATION AICHI TARGETS 11 AND 18





# THANK YOU!

