

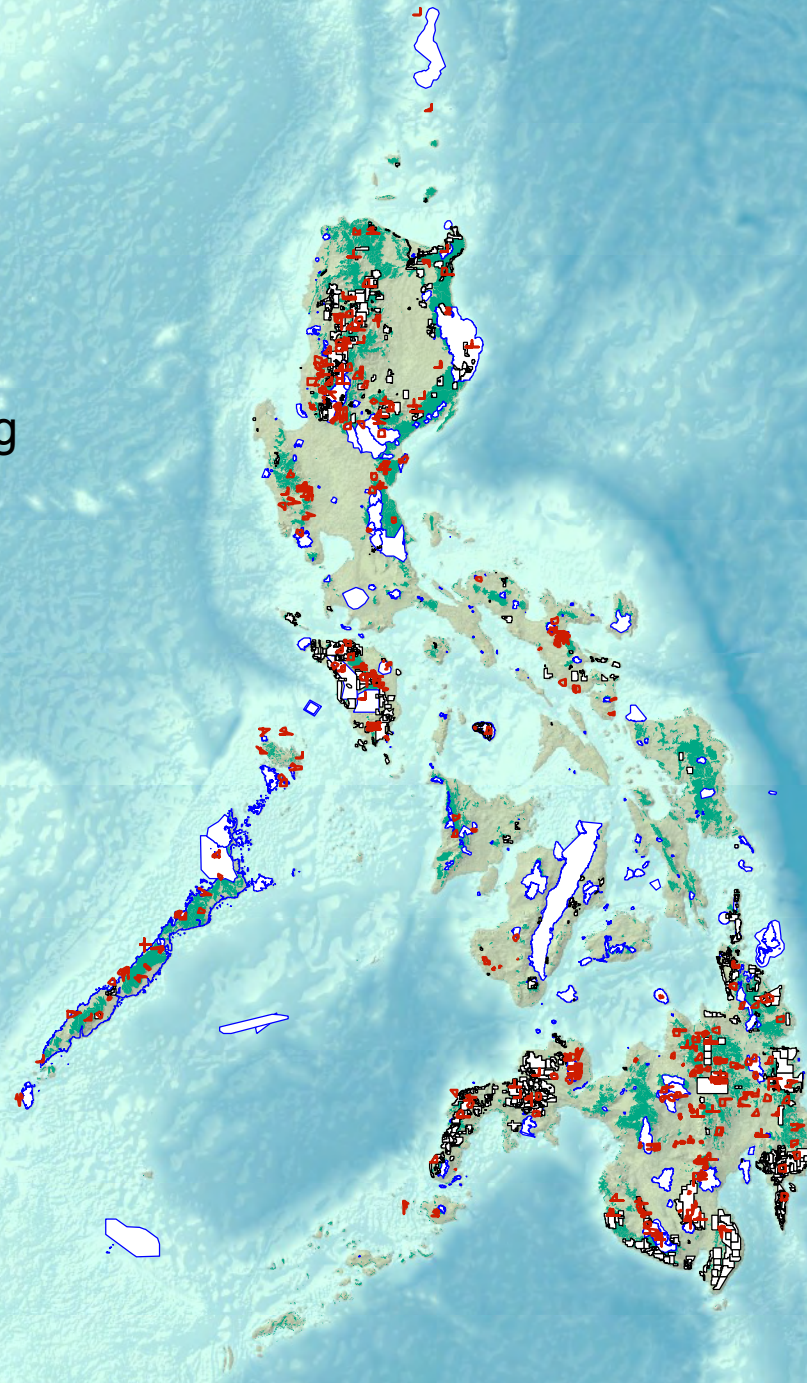
# ANCESTRAL DOMAINS, ICCAs & The PHILIPPINE ICCA CONSORTIUM

BY  
*GIOVANNI B. REYES*





# Ancestral Domains, Protected Areas and Application for Mining Tenements





# In the Footprints of our ancestors

- Our Customary laws evolved prior to Spanish colonial imposition of **REGALIAN DOCTRINE** where lands are owned by the King and later adopted by America except that it was no longer the King who owned our lands but an entity called the State. The doctrine continued through the post-independent republic.





# ICCAs form the heart and soul of Ancestral Domains

**Sacred Lakes & Watershed areas**



**Ritual sites/Home of Spirits**





# ICCAs ARE UNDER THREAT





# IP leaders launched 3 ICCA sub-national and 1 National ICCA Conference





# From margins to mainstream

## Declaration



Consolidation of results



*Formulation of Guidelines during the **Sub-National** conferences*

*Identification of activities during the **National** Conference*

CONSOLIDATED ACTION PLAN

Approved Planned Activities

Plenary Review

Group Planning workshop





# Birth of the Manila Declaration on ICCA





## THE DECLARATION

***EMPHASIZES RIGHTS TO  
ANCESTRAL DOMAINS AND  
OUTLINES THE ROLE OF  
INDIGENOUS COMMUNITIES,  
GOVERNMENT AND CIVIL  
SOCIETY/NGOs***







**For Government: *“View ICCA as a strategy for protection, management, development and Peace Building”***







**For Support Groups: *“Strengthen the involvement and inclusion of indigenous peoples and their support groups”***







**FOR IPs: “COMMUNITIES SHALL PREPARE PLANS FOR THE EFFECTIVE MANAGEMENT OF ICCAs”**







**Formation of Phil ICCA Consortium  
19-22 February 2013**





# AIMS: To Document and Map all ICCAs





# ICCA REGISTRATION AT UNEP-WCMC



United Nations Environment Programme  
World Conservation Monitoring Centre

## FREE, PRIOR AND INFORMED CONSENT FORM

*A Global Registry for Understanding Indigenous and Community Conserved Areas (ICCA)*

We, the undersigned, in representation of the community or indigenous peoples named here **Ayta Abdol of Sida Magaras, New San Juan and Carabin, Cabañan, Zambales**, referred to as "our ICCA Community") holder of the customary rights of **POON BIYAY** (referred to as "our ICCA"), confirm that:

- Our ICCA Community wishes to contribute information to the ICCA Registry managed by UNEP-WCMC.
- This decision has been taken:
  - (a) On the basis of information provided to us about the ICCA Registry by way of the ICCA Registry Information Sheet (available at [www.iccaweb.org](http://www.iccaweb.org)) which we have read and understood; and
  - (b) Following a culturally appropriate process of discussion and consultation in accordance with our normal decision-making practices.
- **Chiefdom Salvador A. Dimain** (give name(s) of informant(s)/provider(s)) are authorized to provide data and information to the ICCA Registry in accordance with this FPIC Form although we may nominate persons or entities to provide data and information to the ICCA Registry from time to time.
- We understand that participation in the ICCA Registry is entirely voluntary.
- We understand that we may withdraw our contribution to the ICCA Registry, or any part of it, at any time without explanation or consequences and that, if we do, we will be entitled to request our information be removed from Registry records and excluded from any future analyses.
- We are providing data and information to the ICCA Registry on the basis that we will retain all our intellectual property rights as recognized by law. There will be no transfer of ownership rights in any such intellectual property to UNEP-WCMC or any of its ICCA partners as a result of any contribution by us of data or information to the ICCA Registry.
- We are providing data and information to the ICCA Registry on the basis that it will not be put to commercial use by UNEP-WCMC, or any of its ICCA partners or any other third party.
- We are providing data and information to the ICCA Registry on the basis that sensitive information about personal identity as well as confidential information will not be disclosed, published or otherwise revealed to any other party whatsoever except with specific prior written authorization.
- We understand that if we have any questions about the operation of the ICCA Registry or the use of any data or information which we have provided, or if we have any complaints or concerns

relating to the ICCA Registry, we may contact the Registry Managers who will discuss our queries or concerns with a view to reaching agreement on an appropriate solution.

- We understand the purposes of the ICCA Registry and the possible uses of information. We understand that there are different levels of access to data and information provided to the ICCA Registry. Data and information may be openly available to the public through the World Database on Protected Areas (subject to the terms and conditions available at <http://www.protectedplanet.net/termsandconditions>) or available on a password protected basis, or available to ICCA Registry Managers only. We are providing data and information to the ICCA Registry on the basis that we may specify the level of access to be given to different types of information, as checked below.

### Use of ICCA Information

Please tick the appropriate boxes if you consent to the provided data being shared in the following ways:

Type of Information	Available to WCMC	Available to ICCA Registry	Available only to Registry Managers and other designated persons	Only available to Registry Managers
General or descriptive information about ICCA(s) <i>(In particular, information about the area, the communities, and the presence of specific species, habitats and/or genetic material (plant/animal) as well as their utilization)</i>	<input type="checkbox"/>	<input type="checkbox"/>	<input checked="" type="checkbox"/>	<input type="checkbox"/>
Point data (latitude and longitude of the central point of the ICCA)	<input type="checkbox"/>	<input type="checkbox"/>	<input checked="" type="checkbox"/>	<input type="checkbox"/>
Boundary data for the ICCA (supplied as a GIS shapefile (if available) or as a map on paper in a publication or on a website)	<input checked="" type="checkbox"/>	<input type="checkbox"/>	<input type="checkbox"/>	<input type="checkbox"/>
Photos, videos and other media	<input type="checkbox"/>	<input checked="" type="checkbox"/>	<input type="checkbox"/>	<input type="checkbox"/>
Additional comments				

\* Information used in the World Database on Protected Areas (WDPA) is governed by the Terms and Conditions: <http://www.unep.org/wcmc/protectedplanet/termsandconditions>

Ayta Community in Cabañan  
**SALVADOR A. DIMAIN**  
Name of community (and signing representative)

January 14, 2013  
Date

A copy of this consent form will be left with the community and a copy will be kept with the Registry Managers at UNEP-WCMC. This form must be completed online at <http://www.iccaweb.org/submit>





# ENGAGE CONSERVATION GROUPS AND TREATY BODIES





# INFLUENCE GLOBAL POLICY ARENAS

UN High Level Plenary Meeting of the General Assembly  
World Conference on Indigenous Peoples, Alta, Norway

Draft Alta Outcome Document

Adoption, Alta Outcome Doc





# THANK YOU!

