



UNIVERSITY OF CENTRAL ASIA
GRADUATE SCHOOL OF DEVELOPMENT
MOUNTAIN SOCIETIES RESEARCH INSTITUTE

Third Pole Science Summit
10 - 12 July 2017

Achieving Sustainability through community level partnerships in the Third Pole Environment (TPE)

EXPERIENCES IN INCLUSIVE BIODIVERSITY CONSERVATION
IN THE SANJIANGYUAN REGION, QINGHAI PROVINCE, CHINA

Dr J Marc Foggin (University of Central Asia)
Dr Gongbo Tashi (Tibet University)



Community Partnerships for Sustainability



Achieving Sustainability through
community level partnerships in the
Third Pole Environment (TPE)

RECENT EXPERIENCES FROM THE SANJIANGYUAN REGION

Inclusive Biodiversity Conservation

Social-Ecological Systems

Successful conservation initiatives always consider important *human dimensions*

Protected Areas

Many benefits arise from *more inclusive* forms of governance and management of protected areas – from ‘community conserved areas’ to formalized ‘national parks’

Sustainability

Need for a *creative synthesis* of social, economic and environmental perspectives

Equity

Sustainable solutions are most readily achieved as *multiple scales* are considered simultaneously, including *local and regional perspectives, needs, and aspirations*, as well as a range of needs and interests of both *present and future generations*

Pastoralism, Development, Globalization

Pastoralism in the 21st Century

Fusion of modern (scientific) with *traditional knowledge systems and approaches*

Sustainable Development Goals

Development recognized as achievement of *individual and corporate wellbeing* together with *sustainable livelihoods* in context of available natural resources

Multiple facets of change

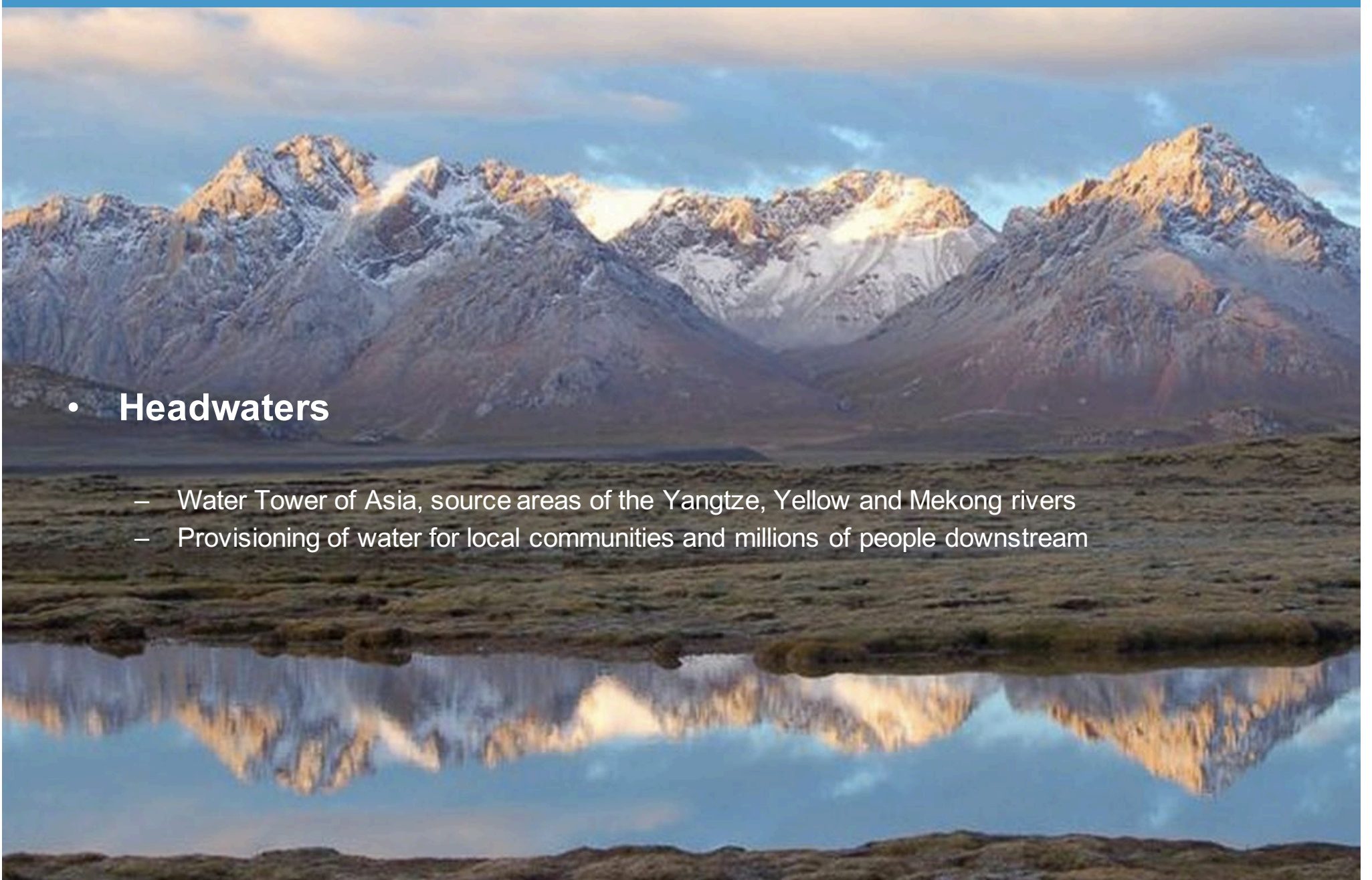
Globalization creates or offers many *new opportunities as well as pressures*, and sometimes also leads to *unexpected, unintended consequences*. Driven mostly by external stakeholders, significant elements in a globalized world include:

- changing market conditions
- information technologies
- infrastructure development
- access to information
- development agendas and policies
- climate change, natural hazards
- financial institutions
- etc.

Sanjiangyuan Region

- **Headwaters**

- Water Tower of Asia, source areas of the Yangtze, Yellow and Mekong rivers
- Provisioning of water for local communities and millions of people downstream



Sanjiangyuan Region

- **Biodiversity**

- Unique alpine ecoregions, extensive grasslands and wetlands
- Endemic species, rare and endangered wildlife species
- Agrobiodiversity (livestock & crop genetic resources)

- **Ecosystem Services**

- Provision and regulation of water
- Habitats for wildlife and people
- Source of food, fuel, fibre, etc.

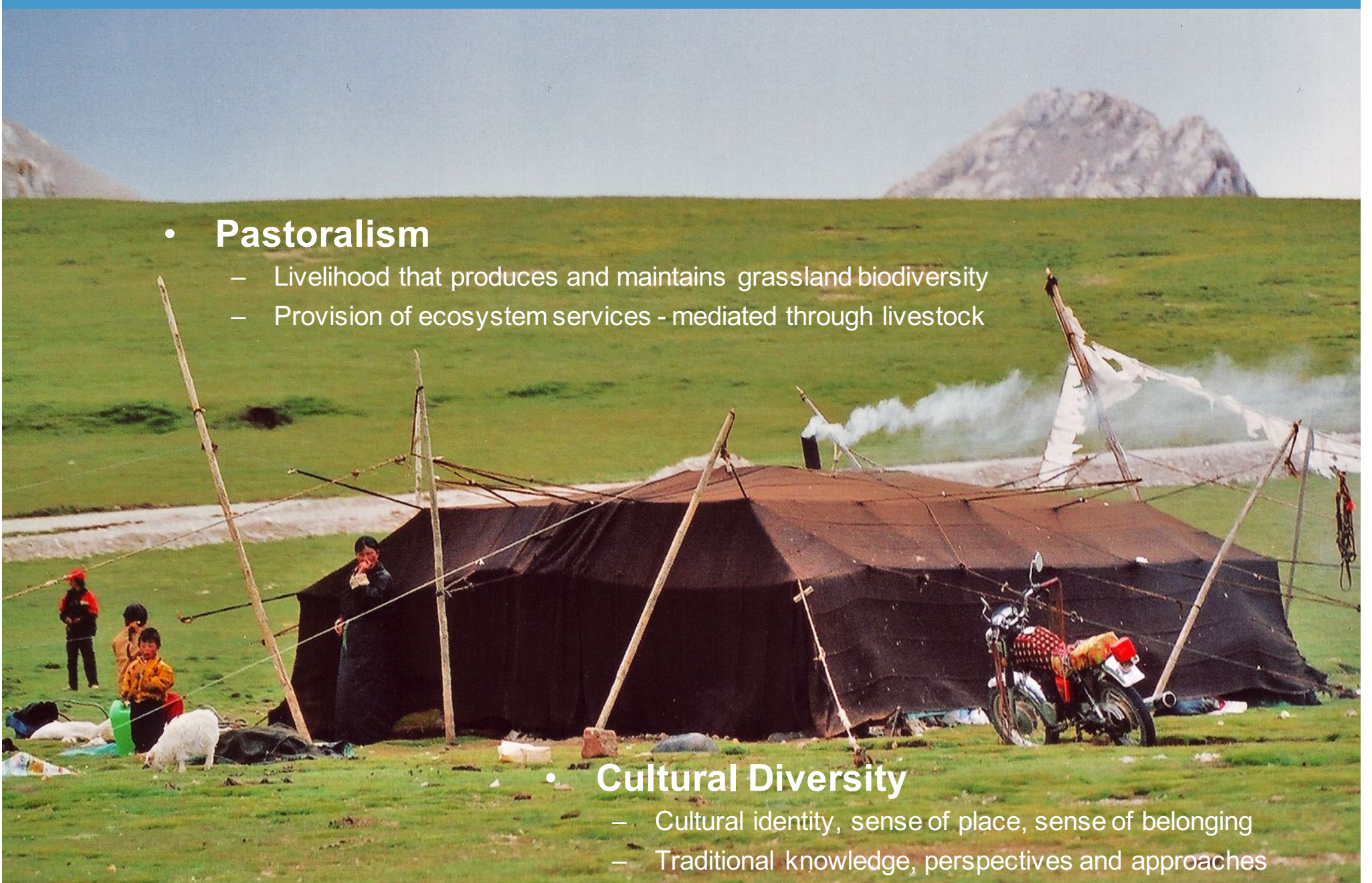
Sanjiangyuan Region

- **Pastoralism**

- Livelihood that produces and maintains grassland biodiversity
- Provision of ecosystem services - mediated through livestock

- **Cultural Diversity**

- Cultural identity, sense of place, sense of belonging
- Traditional knowledge, perspectives and approaches



Historic Developments

Timeline of major events and initiatives in study area

Traditional period

until major changes, 1958

- Hunting livelihood
- Subsistence only
- Tracking of wildlife
- Traditional knowledge
- Tribal organization
- Risk minimization strategy (vs. profit maximization)

Until relocation of local community in 1958...

Modern period

from 1958 to present

- Communes created
- Household Contract Responsibility System
- Privatization of assets (livestock)
- Grassland laws
- Western Development Strategy, emigration and other env. policies
- SNNR incl. community co-management
- Trial phase of SNP

Local initiatives

from ~1990 to present

- Western Dev. Comm. and Wild Yak Brigade
- Village wildlife laws
- UYO and Local PAs
- SGREPA & others
- Initial trialing of local community co-mgmt.
- CD revolving funds & herders' cooperatives
- Community tourism and other targeted poverty alleviation

Multiple Perspectives and Approaches in Conservation

1. BRIDGING WORLDS

- Traditional and modern
- Local, national & global



2. TRIALING NEW APPROACHES

3. TRANSLATING SCIENCE TO POLICY & PRACTICE



Community Partnerships

Community based
conservation



Partnerships for
conservation

- Community conservation areas created in 1998
- Inclusive “co-management” approaches integrated into SNNR plans from c. 2006
- Community “associations” trialed/developed, including revolving funds – building local admin capacities
- Local herders’ cooperatives trialed/established – support for environmentally-friendly new development ventures



Community Partnerships

Community based
conservation



Partnerships for
conservation

- **Community conservation areas created in 1998**
- Inclusive “co-management” approaches integrated into SNNR plans from c. 2006
- Community “associations” trialed/developed, including revolving funds – building local admin capacities
- Local herders’ cooperatives trialed/established – support for environmentally-friendly new development ventures

Community Conserved Areas



Community Partnerships

Community based
conservation



Partnerships for
conservation

- Community conservation areas created in 1998
- Inclusive “co-management” approaches integrated into SNNR plans from c. 2006
- Community “associations” trialed/developed, including revolving funds – building local admin capacities
- Local herders’ cooperatives trialed/established – support for environmentally-friendly new development ventures

Community Co-Management



Community Partnerships

Community based
conservation



Partnerships for
conservation

- Community conservation areas created in 1998
- Inclusive “co-management” approaches integrated into SNNR plans from c. 2006
- **Community “associations” trialed/developed, including revolving funds – building local admin capacities**
- Local herders’ cooperatives trialed/established – support for environmentally-friendly new development ventures

Community Associations



Community Partnerships

Community based
conservation



Partnerships for
conservation

- Community conservation areas created in 1998
- Inclusive “co-management” approaches integrated into SNNR plans from c. 2006
- Community “associations” trialed/developed, including revolving funds – building local admin capacities
- Local herders’ cooperatives trialed/established – support for environmentally-friendly new development ventures

Herders’ Cooperatives



明年他们就可以成为保护员



- Snowline is rising
- Flowers are earlier
- Wildlife is monitored



© Kegawa

Lessons Learned

1. Sense of identity and 'ownership'

The value of **place** refers to the special character, or to perceived value or meaning of a place, for local communities and cultures

A **sense of identity** may be derived from place by people and/or communities, by cultures, or by people with certain livelihoods (e.g., nomadic pastoralism)

Such 'identity' contributes to a strong **sense of local ownership** of conservation outcomes, hence to decisions and actions taken by local communities



Lessons Learned

1. Sense of identity and 'ownership'

The value of **place** refers to the special character, or to perceived value or meaning of a place, for local communities and cultures

A **sense of identity** may be derived from place by people and/or communities, by cultures, or by people with certain livelihoods (e.g., nomadic pastoralism)

Such 'identity' contributes to a strong **sense of local ownership** of conservation outcomes, hence to decisions and actions taken by local communities

2. Partnerships for sustainability

A **wide range of stakeholders** value the environment, conservation & sustainability – incl. local communities e.g. pastoral communities

Building **genuine, lasting partnerships** is essential for conservation



Lessons Learned

1. Sense of identity and 'ownership'

The value of **place** refers to the special character, or to perceived value or meaning of a place, for local communities and cultures

A **sense of identity** may be derived from place by people and/or communities, by cultures, or by people with certain livelihoods (e.g., nomadic pastoralism)

Such 'identity' contributes to a strong **sense of local ownership** of conservation outcomes, hence to decisions and actions taken by local communities

2. Partnerships for sustainability

A **wide range of stakeholders** value the environment, conservation & sustainability – incl. local communities e.g. pastoral communities

Building **genuine, lasting partnerships** is essential for conservation

3. Integrated perspectives

Successful conservation necessitates that both natural and social sciences be considered in tandem, as part of **integrated social-ecological systems** – considering the human dimensions of conservation is essential for long-term success



Lessons Learned

1. Sense of identity and 'ownership'

The value of **place** refers to the special character, or to perceived value or meaning of a place, for local communities and cultures

A **sense of identity** may be derived from place by people and/or communities, by cultures, or by people with certain livelihoods (e.g., nomadic pastoralism)

Such 'identity' contributes to a strong **sense of local ownership** of conservation outcomes, hence to decisions and actions taken by local communities

2. Partnerships for sustainability

A wide range of stakeholders value the environment, conservation & sustainability – incl. local communities e.g. pastoral communities

Building **genuine, lasting partnerships** is essential for conservation

3. Integrated perspectives

Successful conservation necessitates that both natural and social sciences be considered in tandem, as part of **integrated social-ecological systems** – considering the human dimensions of conservation is essential for long-term success

4. Models of conservation

Multiple models of PAs exist – from 'community conserved areas' to formal nature reserves, national parks, etc. Each has **different benefits**. Multiple overlapping models could **increase resilience**.

Achieving Sustainability through Broad Partnerships



Thank you



UNIVERSITY
OF CENTRAL ASIA

www.ucentralasia.org/msri/

marc.foggin@ucentralasia.org




PLATEAU PERSPECTIVES
Community Development & Conservation

www.plateauperspectives.org