

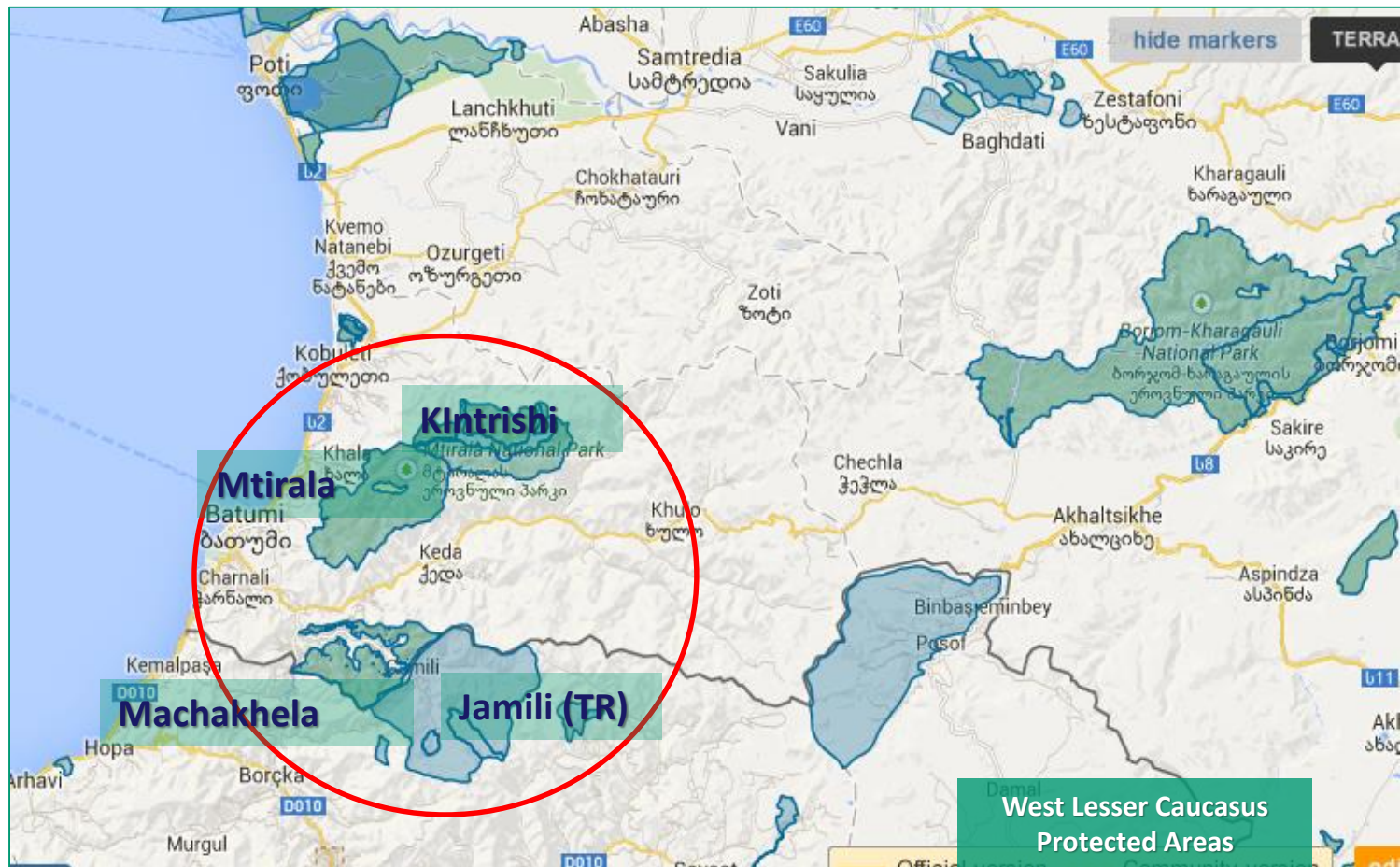
# Community Conserved Areas of Machakheli valley, Georgia

Irakli Goradze  
UNDP Georgia  
Batumi



## Colchic forests Protected Areas in Achara Region

**UNDP Project objectives:** to enhance the management effectiveness, biogeographical coverage and connectivity of Protected Areas of Achara in order to better conserve the globally unique Colchic Forests.





## Machakheli valley

- Total area 12700 ha
- National Park area 8700 (in 2014)
- 9 villages
- Population app. 3000





# Machakhela National Park Boundary Demarcation

**Machakhela National Park**

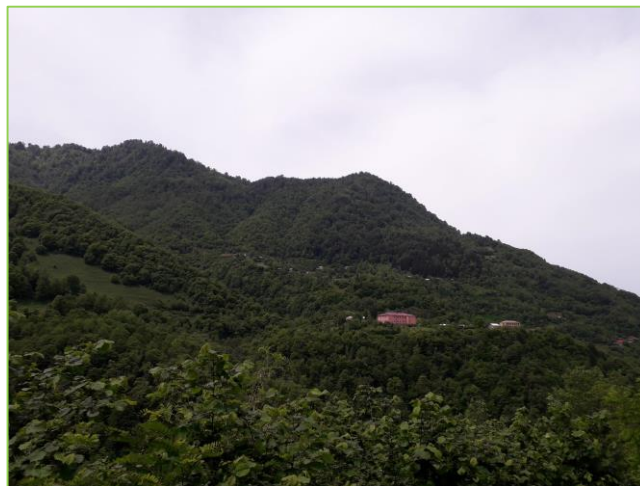
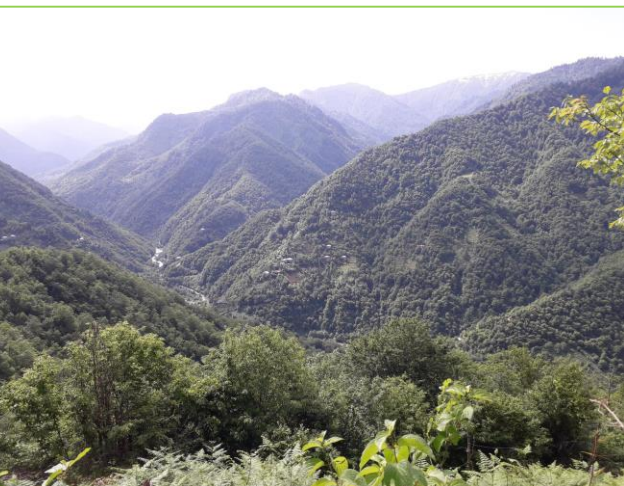
Boundaries 2017



5 km



# Saphari forests



# Saphari forests – Community Conserved Areas

---

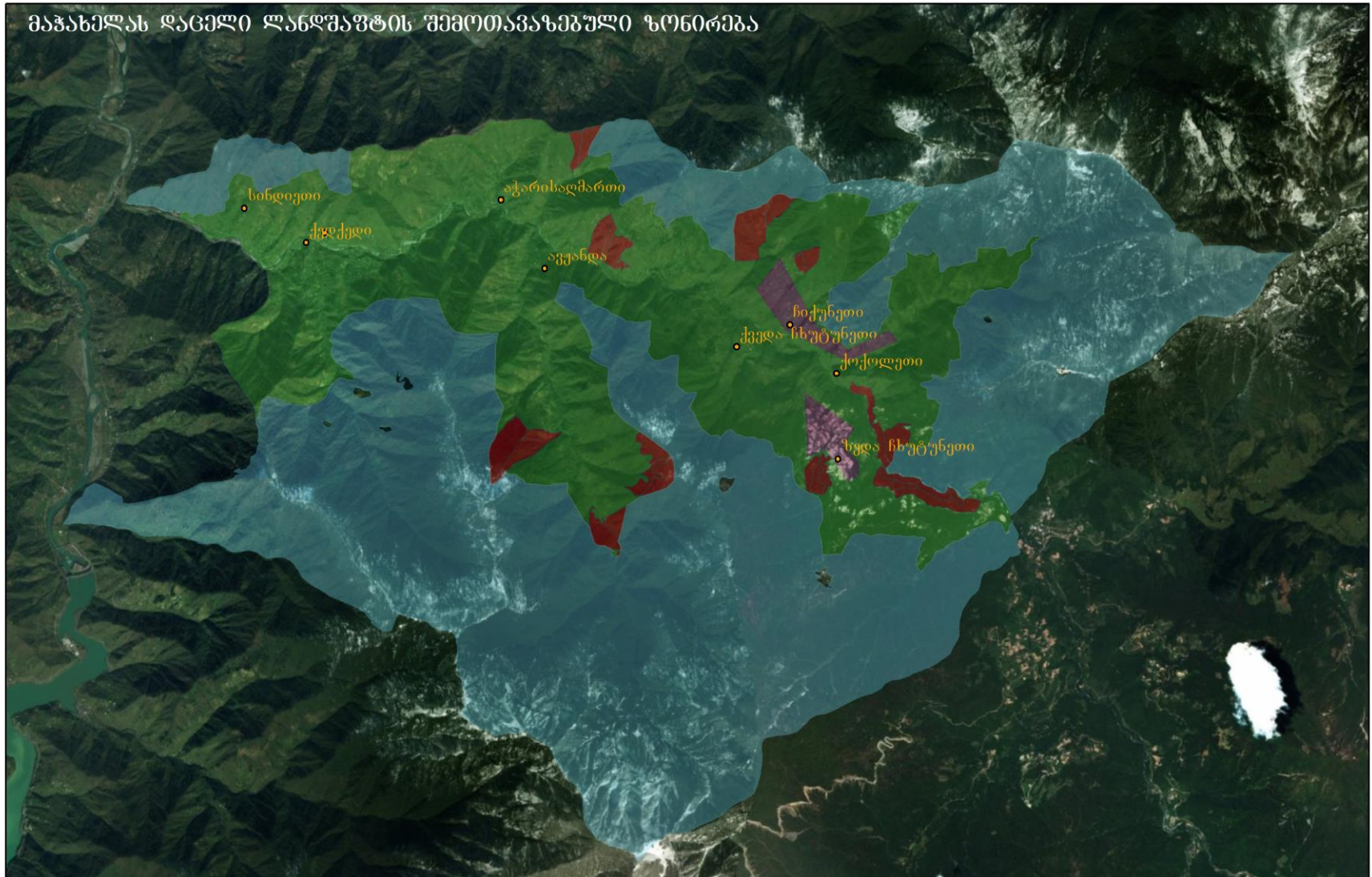
- local community has a **strong connection** with a territory
- community is a **major (albeit informal) player in decision-making and implementation of decisions**
- community's governance decisions and management efforts lead to the **conservation of nature**

ICCA Type D: Resource catchment areas, from which communities make their essential livelihoods or from which key ecosystem benefits are derived, managed in such a way that these benefits are sustained over time;

# **Saphari forests – next steps**

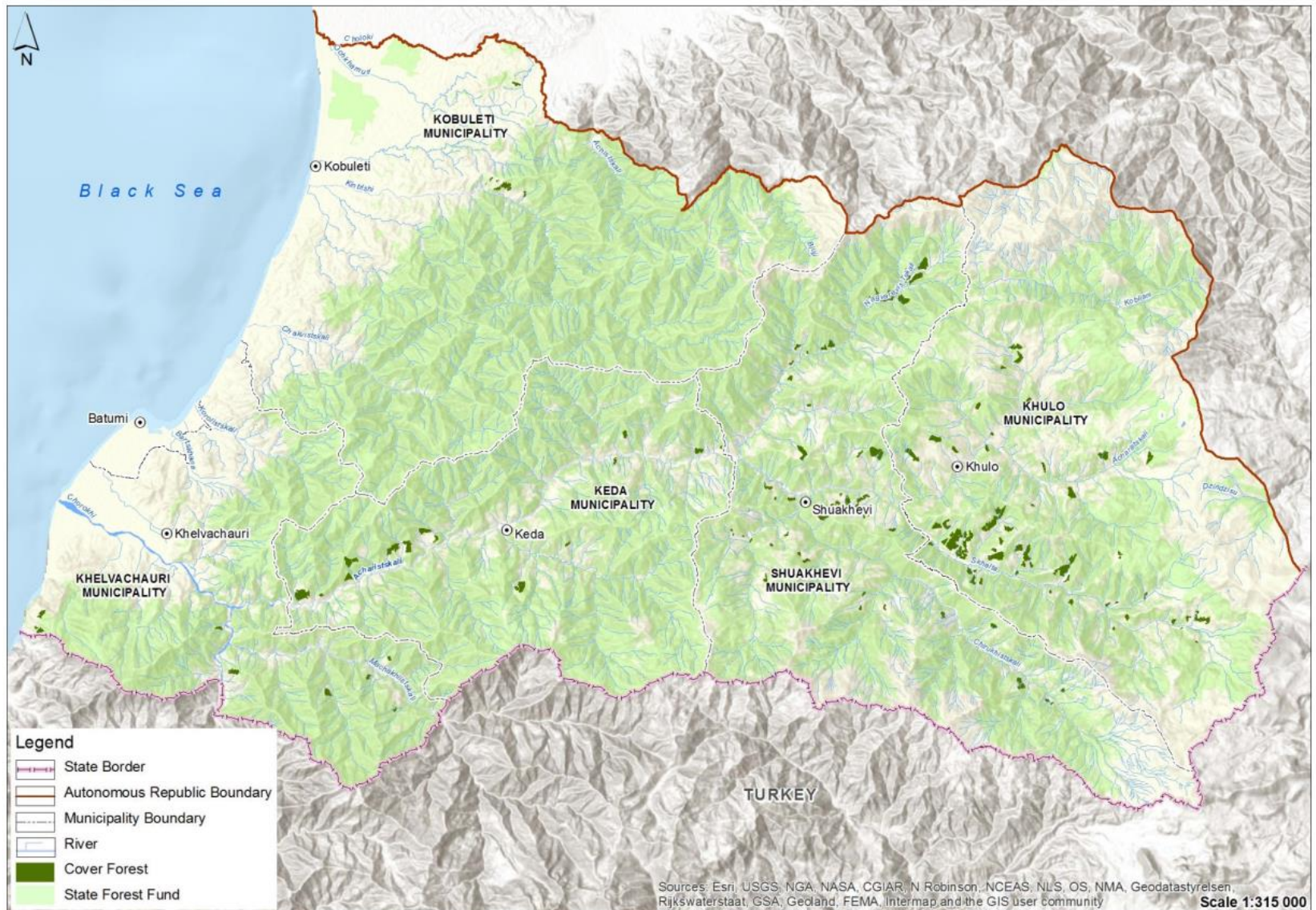


# Inclusion in the PA - Planned Machakhela Protected Landscape





# Functional zonation of forests-Achara Region



# Other Options/ideas?

---

**Thank you!**



*Empowered lives.  
Resilient nations.*

**Irakli Goradze**  
**UNDP/GEF Project Coordinator**  
**Enhancing Financial Sustainability of the**  
**Protected Areas System in Georgia**

52, Gorgasali St., Batumi, 6010 Georgia

Cell Phone: (+995 577) 454882

email: [irakli.goradze@undp.org](mailto:irakli.goradze@undp.org)

