

**The ICCA
Consortium**

The ICCA Consortium Regionalisation Process

15th General Assembly,
Udaipur, india

The Regionalisation Process

- Process started in 2017
 - Questionnaires for Members and regions
 - Meetings with Secretariat
 - Meetings of the Membership Committee
 - Chaired by Dominique Bikaba

5 Regional Assemblies
this year

Guidelines on
regionalisation



Europe

- 1st RA in [Europe](#)



North America

- 1st RA in [North America](#)



West and Central Asia and Caucasus

- 1st RA in [Armenia](#)



Latin America



South Asia

- 1st RA in India



South East Asia Regionalisation process

- 1st Regional Assembly / Meeting
- Meeting of the learning network in August 2018 to discuss regionalisation with the following output:
 - the members agreed to regionalisation but to balance it with strengthening of national (Country level) networks
 - We agreed on a structure for our region, and agreed that membership recruitment should be decentralized; our governance should be member-led
 - a vision for the Régional Learning Network drafted
 - agreement with NTFP Asia as the secretariat or regional hub
- Next Regional assembly planned for 1st quarter of 2020



Vision Statement

A vibrant and inclusive network of IPLCs and NGOs working together to support mutual learning, enhance awareness and capacities, and strengthen solidarity and action for appropriate recognition and self-strengthening of ICCAs in Southeast Asia.



Structure

- *The proposed regional ICCA Consortium will be composed of the following:*
 - *Regional Assembly*
 - *This will be the highest governing body in the region. Only ICCA Consortium members (organizations) will make up the Regional Assembly.*
 - *Regional Learning Network*
 - *We should encourage organizations of the Regional Learning Network to be ICCA Consortium members. As we are both a governing and learning body, the Regional Learning Network should not be dissolved. There should be a criteria and procedure for membership before this goes to the current global procedure. A process for recruiting members should come from the regional steering committee.*
 - *Regional Council*
 - *The regional council will be composed of one seat for each country. At least one of the representatives should be a woman. Two of these will be selected by the Regional Assembly to represent the region in the global council.*
 -

Regional Secretariat

Regional Coordinator

The regional council appoints the regional secretariat and/or coordinator.

There should be a counterpart at the regional level for the thematic point people at the global level.

Regional Hub

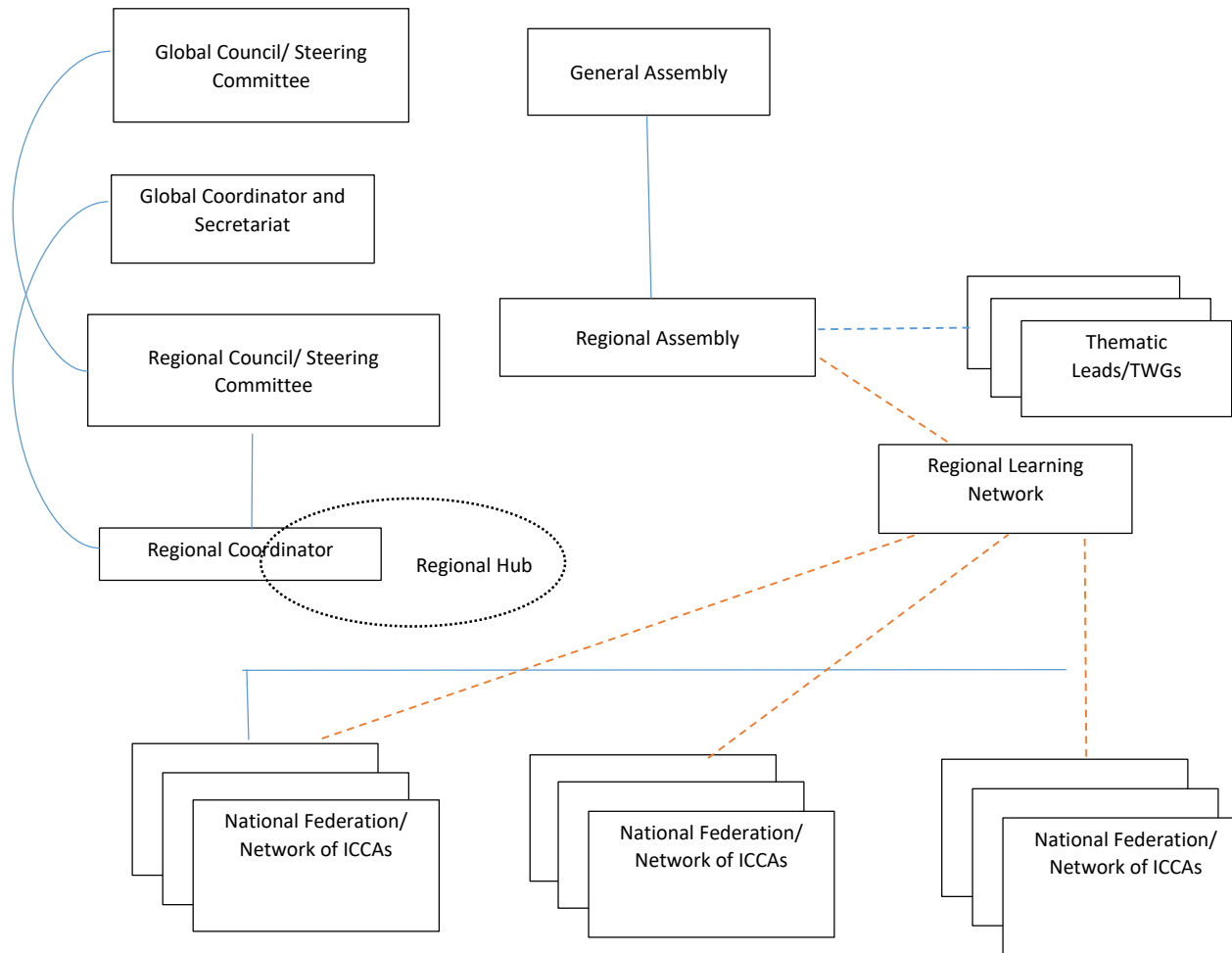
The regional hub for now will be NTFP-EP as it has regional operations. For now the hub acts as a desk for the coordinator. The role of the hub will have to be expounded once the structure is agreed on.

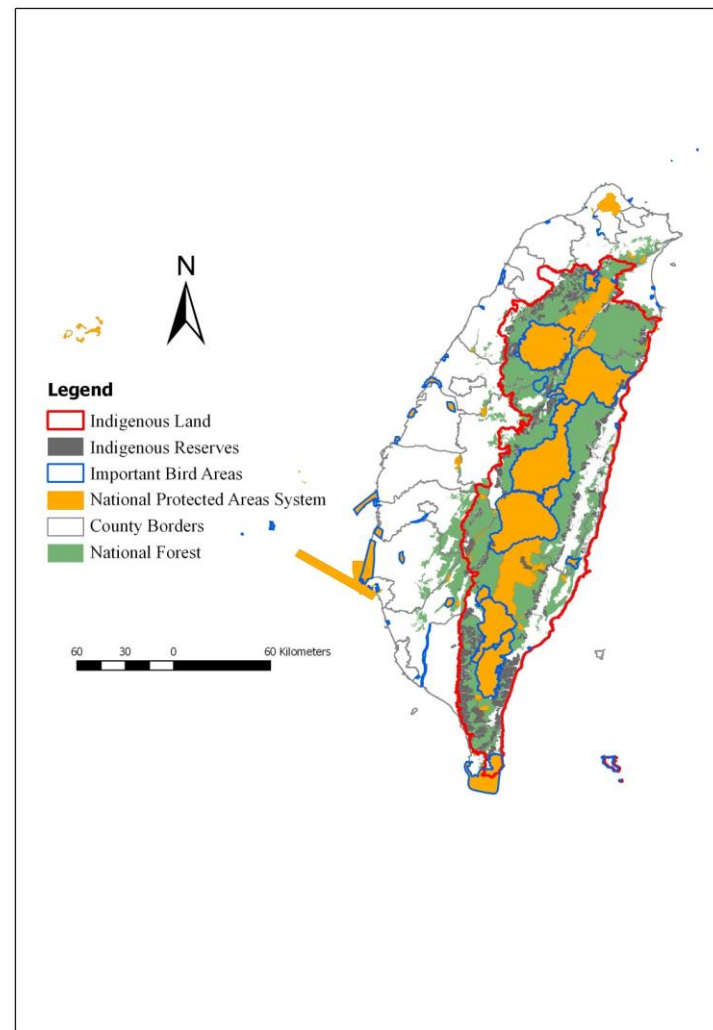
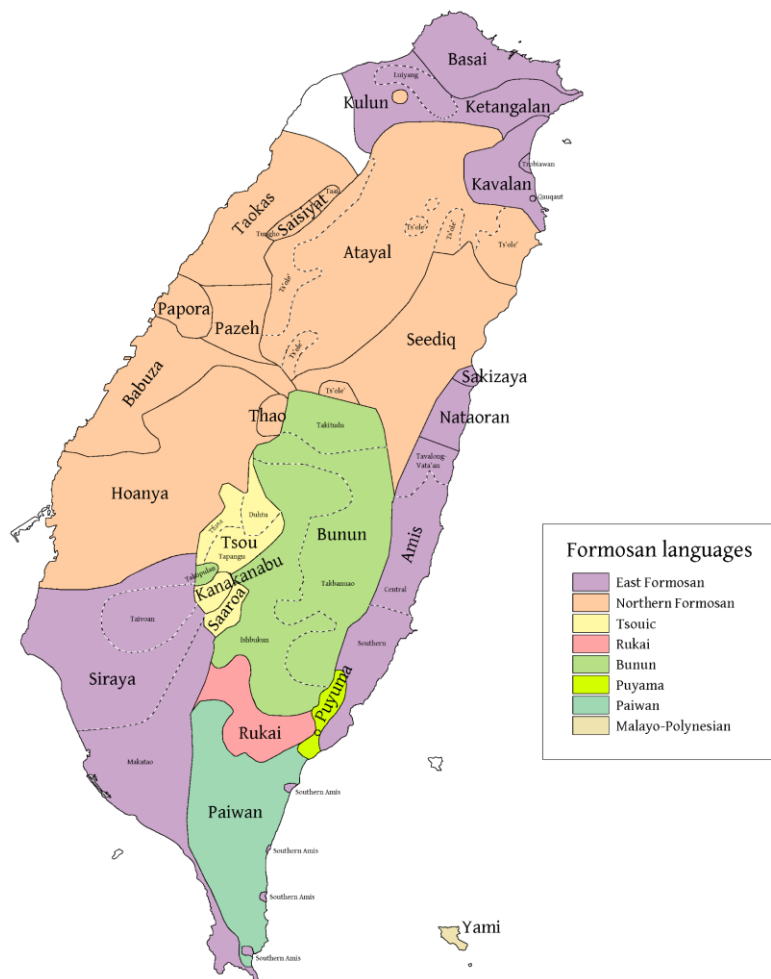
National Networks

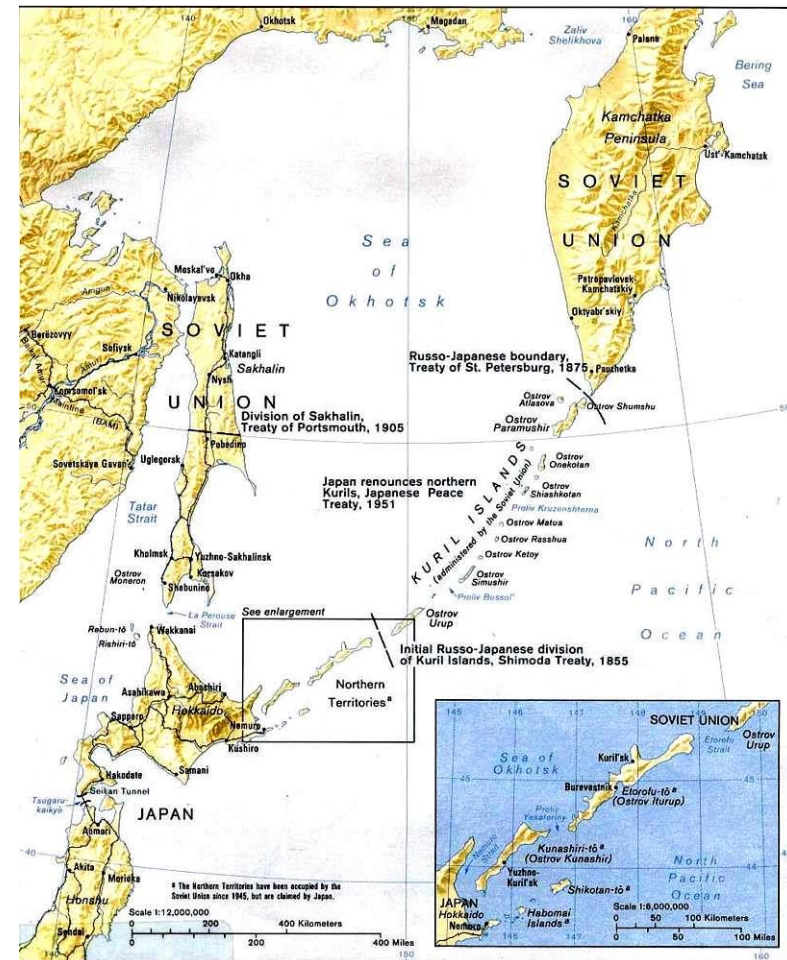
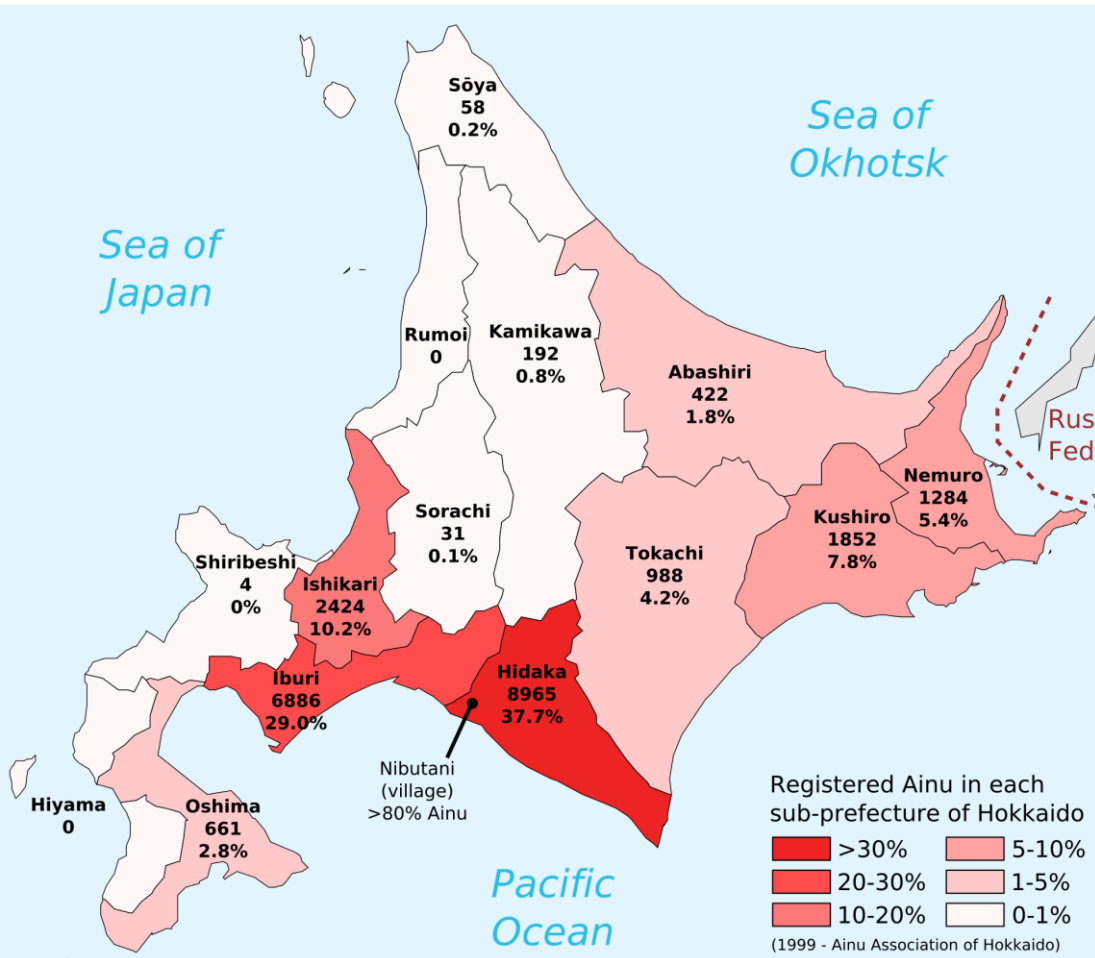
The national networks may have a wider membership than the Regional Assembly; for example, relevant government agencies, partners and communities. The structure and composition will depend on the needs of the country and do not have to be the same for all.

National Focal Points or National Coordinators

National focal points will be decided by the countries.







THE MAP OF CHINA' S ETHNIC GROUPS

KEY:

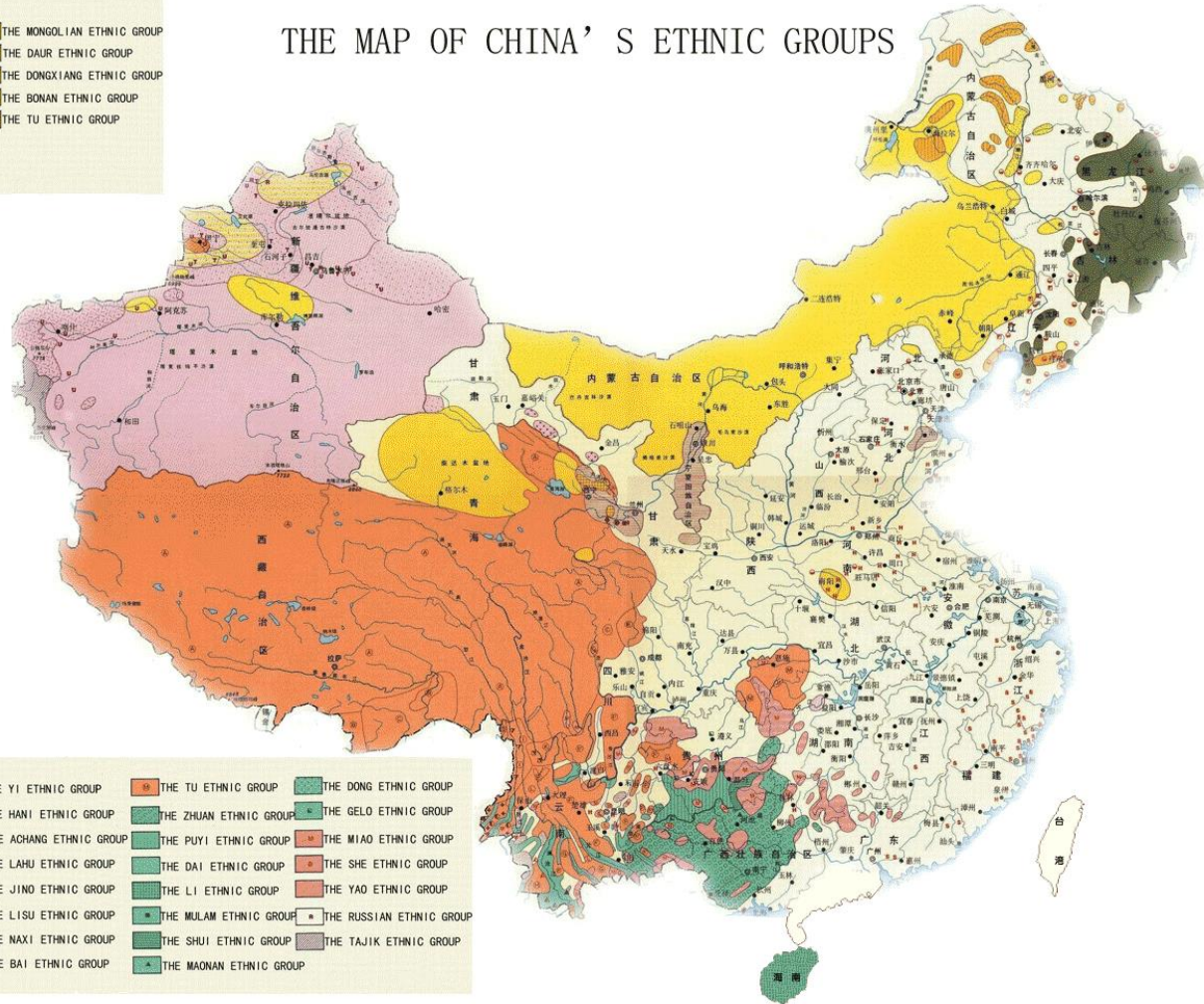
- | | |
|-------------------------|----------------------------|
| THE UYGUR ETHNIC GROUP | THE MONGOLIAN ETHNIC GROUP |
| THE KAZAK ETHNIC GROUP | THE DAUR ETHNIC GROUP |
| THE KIRGIZ PEOPLE | THE DONGXIANG ETHNIC GROUP |
| THE MAONAN ETHNIC GROUP | THE BONAN ETHNIC GROUP |
| THE YUGUR ETHNIC GROUP | THE TU ETHNIC GROUP |
| THE UZDEKS ETHNIC GROUP | |
| THE TARTAR ETHNIC GROUP | |

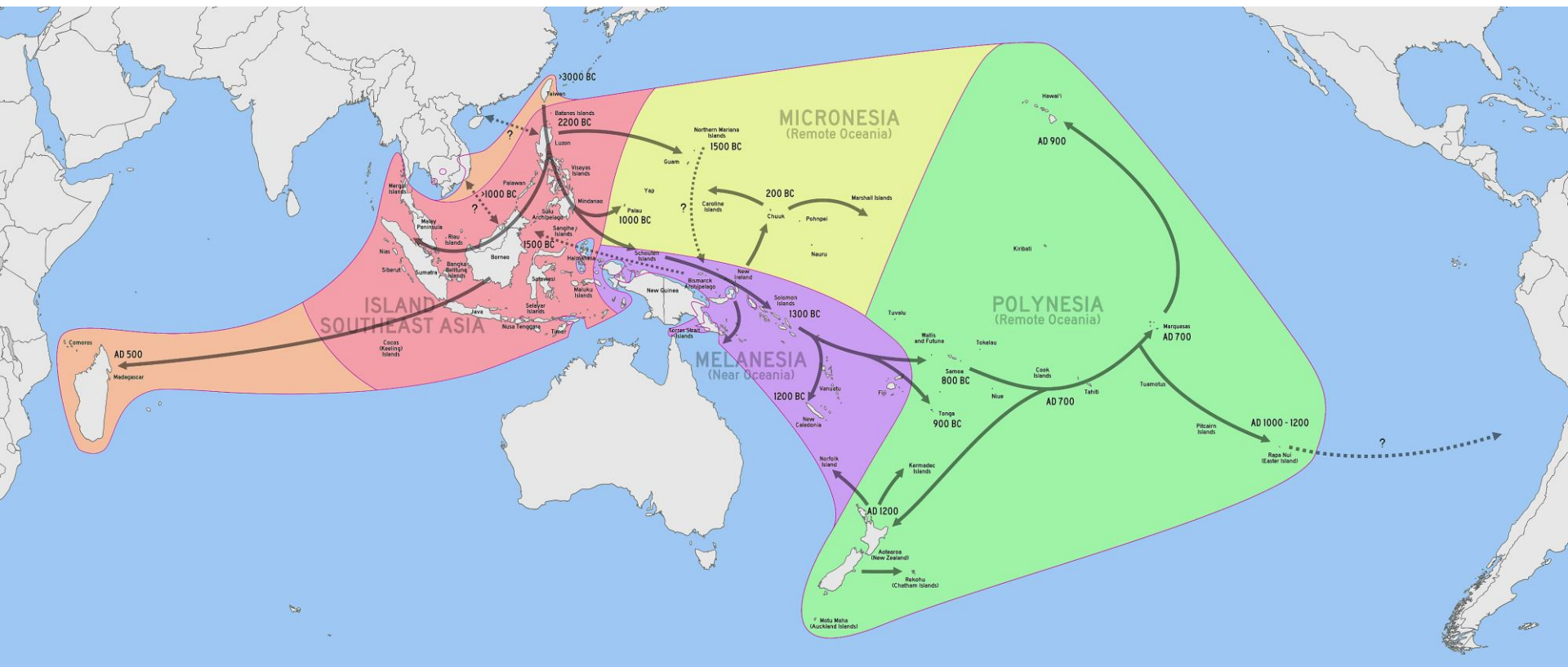
KEY:

- | |
|--------------------------|
| THE EWENKI ETHNIC GROUP |
| THE XIBE ETHNIC GROUP |
| THE MANCHU ETHNIC GROUP |
| THE OROOEN ETHNIC GROUP |
| THE HEZHE ETHNIC GROUP |
| THE KOREAN ETHNIC GROUP |
| THE HUI ETHNIC GROUP |
| THE GAOSHAN ETHNIC GROUP |
| THE YUGUR ETHNIC GROUP |
| THE DE' ANG ETHNIC GROUP |
| THE VA ETHNIC GROUP |
| THE BLANG ETHNIC GROUP |

KEY:

- | | | | |
|--------------------------|-------------------------|-------------------------|--------------------------|
| THE TIBETAN ETHNIC GROUP | THE YI ETHNIC GROUP | THE TU ETHNIC GROUP | THE DONG ETHNIC GROUP |
| THE MOINBA ETHNIC GROUP | THE HANI ETHNIC GROUP | THE ZHUAN ETHNIC GROUP | THE GELO ETHNIC GROUP |
| THE LHABA ETHNIC GROUP | THE ACHANG ETHNIC GROUP | THE PUYI ETHNIC GROUP | THE MIAO ETHNIC GROUP |
| THE JINGPO ETHNIC GROUP | THE LAHU ETHNIC GROUP | THE DAI ETHNIC GROUP | THE SHE ETHNIC GROUP |
| THE DRUNG ETHNIC GROUP | THE JINO ETHNIC GROUP | THE LI ETHNIC GROUP | THE YAO ETHNIC GROUP |
| THE NU ETHNIC GROUP | THE LISU ETHNIC GROUP | THE MULAM ETHNIC GROUP | THE RUSSIAN ETHNIC GROUP |
| THE QIANG ETHNIC GROUP | THE NAXI ETHNIC GROUP | THE SHUI ETHNIC GROUP | THE TAJIK ETHNIC GROUP |
| THE PUMI ETHNIC GROUP | THE BAI ETHNIC GROUP | THE MAONAN ETHNIC GROUP | |





Proposed Guidelines for the Regions

- Pulled together with the findings of the past 3 years processed
- Currently discussed actively by the Council
- Discussion starting with the Secretariat
- Hopefully approved by June 2020
- Based on a wide diversity of already existing regional processes...
- And inter regional solidarity, experience exchange



A timeline

GA - december 2019	A "GUIDELINE" PRODUCED ON : <ol style="list-style-type: none">1) the requirements expected from hubs/focal points2) the role and “legitimacy” of the regional Assembly3) clarification on the relationship between international secretariat and hubs
January 2020	Regions communicate: <ul style="list-style-type: none">- their action plan (just like RC did before) with clear goals- their fundraising strategy
March 2020	The international Secretariat provides tools to strengthen membership in the region : <ul style="list-style-type: none">- Member welcome package with videos- Clarity on membership fee collection- Membership online platform- Planning of the membership review
June 2020	After discussions among the Council, the Secretariat, the last version of the guidelines is released. Clarifications of hubs settlement strategy
July 2020	Mid-term online meetings between International Secretariat and each region representatives to evaluate needs
December 2020	The regions reports on their work through the region
End of 2020, or 2021	The Operationnal Guidelines and/or Statutes are revised according to the requirements of the regions.

Regions (6)	Sub regions (18)	Hub / regional coordinator	Council Rep
AFRICA	North Africa and the Sahel		1
	West Africa and Madagascar	Salatou Sambou and NATUDEV / Alexis Kaboré	1
	Central Africa	ANAPAC	1
	East Africa and the Horn of Africa	Emmanuel Sulle	1
	Southern Africa		1
ASIA AND PACIFIC	South Asia	Kalpavriksh / Neema Pathak	1
	Southeast Asia	NTFP - EP	1
	East Asia		1
	East Austronesia	TICTU / Sutej Hugu	1
	West and Central Asia and the Caucasus	Cenesta / Ali Ramzah	1
LATIN AMERICA	Spanish-speaking Mesoamerica & Caribbean	U Yich Luum / Albert Chan Dzul	1
	Amazon region (including Amazonian Brazil)	SAVIA / Carmen Miranda	1
	South Cone (including Southern Brazil)	Observatorio ciudadano / Lorena Arce	1
ARCTIC	for Northern Europe and Russia	Snwochange	1
	Alaska and Northern Canada	Snowchange	1
NORTH AMERICA	sub-polar parts of Canada and USA, and English-speaking Meso- and South America and Caribbean	Eli Enns	1
EUROPE	Southern Europe and the Mediterranean region	Iniciativa Comunales / Sergio	1
	Western, Central and Eastern Europe	Iniciativa Comunales / Sergio	1

Hubs Roles

The hubs are in charge of creatively implementing the ICCA Consortium strategy and work at the regional level.

It should nurture collaboration and communication among the region, but also between the regions and the international work/secretariat.

- Assuming the unique features of the region, it is creatively maintaining the coherence with the Global Consortium
- A mandatory yearly regional plan and report
- Fundraising: Hubs encouraged to work on their own fundraising
- Taking care and improving the relationship with Members
- Membership management
- Communication
- Selection of the national focal points
- Organisation of the Regional Assembly

Hubs objectives

- **Understand ICCAs in the region**, establish links with their governing communities and identify a sound and defensible **list of emblematic ICCAs**
- **Identify appropriate and willing ICCA Focal point organisations** in all countries in your region and nourish effective joint planning and collaboration
- **Collaborate with relevant GEF SGP offices and GSI National Catalytic Organisations** towards the effective delivery of GSI in all your priority countries
- Facilitate ICCAs **self-strengthening processes** in emblematic ICCAs
- Support **the development of ICCA Networks at national level and peer-review processes** for ICCA international registration
- Support the **ICCA Networks to analyse their national situation**, plan for action and advocate for appropriate change in policy and practice
- **Fundraise effectively** to support your regional and national plans
- Strengthen the Consortium in the region by **recruiting new Members** and helping existing Members to engage and benefit. Manage the steps of the Membership application evaluation
- **Communicate about ICCAs in your region**, including elaborating a communication plan

Hubs Roles

The hubs are in charge of creatively implementing the ICCA Consortium strategy and work at the regional level.

It should nurture collaboration and communication among the region, but also between the regions and the international work/secretariat.

- Assuming the unique features of the region, it is creatively maintaining the coherence with the Global Consortium
- A mandatory yearly regional plan and report
- Fundraising: Hubs encouraged to work on their own fundraising
- Taking care and improving the relationship with Members
- Membership management
- Communication
- Selection of the national focal points
- Organisation of the Regional Assembly

Regional Assembly

- Reviews the work that is implemented in the region,
- The partnerships,
- The fundraising strategies,
- The membership and membership strategy.
- It participates in the elaboration of the work plan in short, middle and long term.
- Election of the Regional Council (if appropriate)
- Election of the Regional Rep in the Global Council
- Implies changes in the Global Operational Guidelines

Questions at stake

- How will the regionalisation process permit the ICCA Consortium to **reinforce its identity as membership-based organisation** ?
- What are, more precisely, the **role and functioning** of the hubs/regional coordinators ?
- How will they **communicate with the Global Secretariat and Council**?
- What are the **criteria to select a hub**?
- Can a Honorary Member be **member of Council**?
- How to organize **fundraising** - at regional level or global level?

Your advice on Hubs

On the following topic:

- ✓ Membership management (application review, fees, new Members)
 - ✓ Communication with membership
 - ✓ Fundraising
 - ✓ Communication with Global Council and secretariat
-
- **What do you want to see hubs doing?**
 - **What do you not want to see hubs doing?**